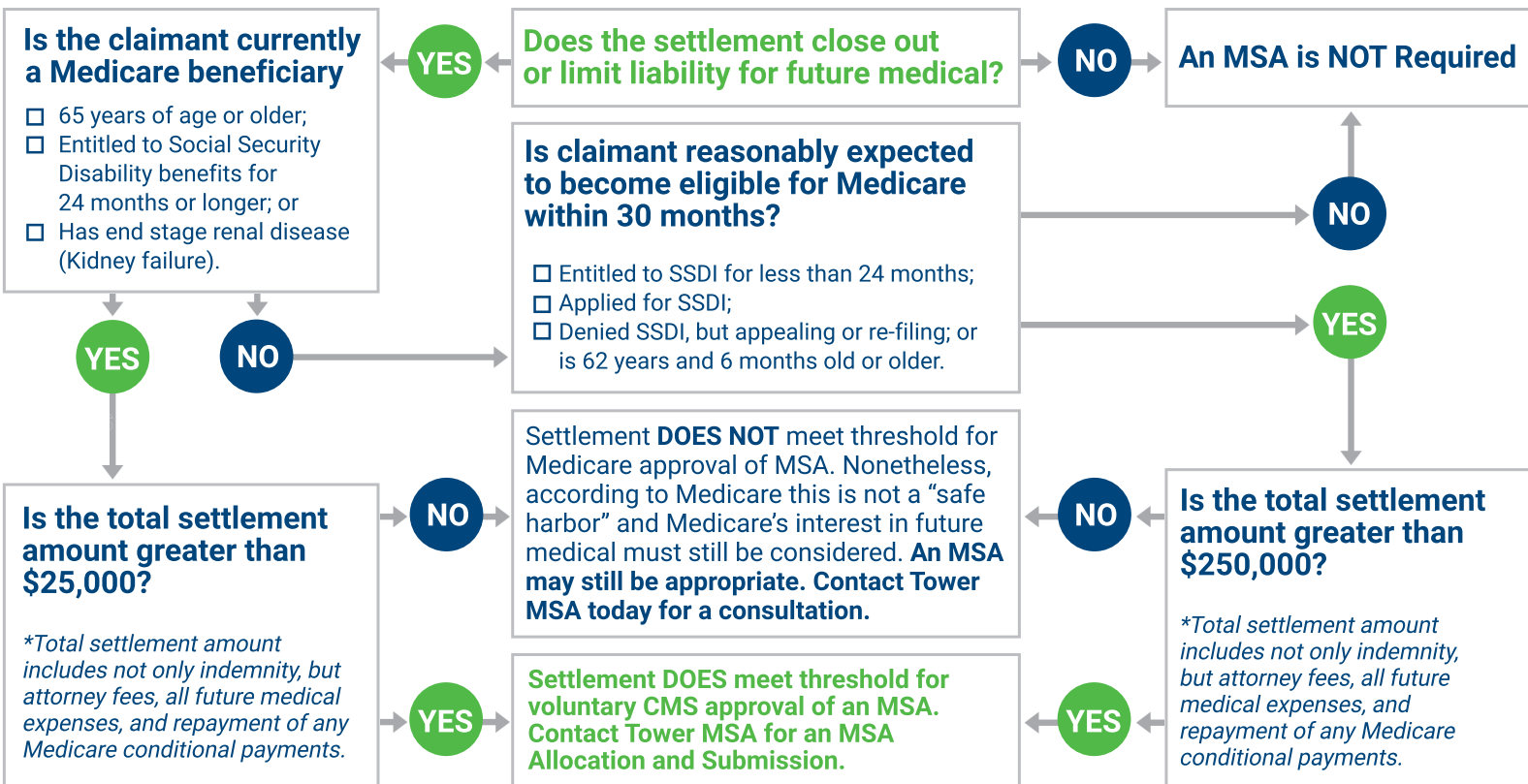


Do You Need A Workers' Compensation Medicare Set-Aside (WCMSA?)



Tower MSA Partners MSP Compliance Services

- Social Security Disability/Medicare Entitlement Search
- Section 111 Reporting & Claim Automation
- Pre-MSA Triage
- Workers Compensation Medicare Set-Aside
- Physician Follow Up
- Physician Peer Review
- Clinical Oversight
- Preparation and Submission of MSA to CMS
- Medicare Conditional Payment Investigation, Dispute & Resolution
- Medicare Advantage Plan and Medicaid Investigation, Dispute and Resolution

Do You Need A Workers' Compensation Medicare Set-Aside (WCMSA?)

How to Make a Referral

- Via web: www.towermsa.com (Click Refer and complete referral form)
- Via e-mail: referrals@towermsa.com
- Via phone: (888) 331-4941

Upon receipt of referral a Tower MSA representative will contact you to request any additional information.

Information Required at Time of MSA Referral

- ✓ Completed Tower MSA Referral Form
- ✓ First Report of Injury
- ✓ Medical Records for the Last Two Years of Treatment
- ✓ Claim Payment History
- ✓ Prescription Payment History
- ✓ Court Rulings/Orders or Other Relevant Legal Documents, if any

Note, if more than one date of injury to be included in the MSA then above information is required for each DOI.

Information Required for MSA Submission

- ✓ Claimant Executed Consent to Release Form
- ✓ Estimated Settlement Amount
- ✓ MSA funding: Lump Sum or Annuity
- ✓ MSA Administration: Self or Professional
- ✓ Draft or Final Settlement Documents, if any